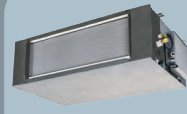
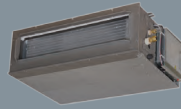


PRODUCT SPECIFICATIONS

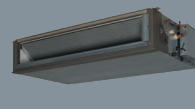
FDUA SERIES



FDUA100-160VF



FDUA71VF



FDUA200VG



FDCA71VNXA



FDC100VNP / FDCA100VN



FDCA100-140VNX, FDC125VSX, FDCA140VSX



FDCA160-200VSA

FDUA		CAPACITY	7.1 KW	10.0 KW	10.0 KW	10.0 KW	12.5 KW	14.0 KW	12.5 KW	14 KW	16 KW	20 KW	
Set			FDUA71AVNXAVF	FDUA100VNP1VF2	FDUA100AVNVF2	FDUA100AVNXVF2	FDUA125AVNXVF	FDUA140AVNXVF	FDUA125VSXVF	FDUA140AVSXVF	FDUA160AVSAVF	FDUA200AVSAVG	
Indoor			FDUA71VF	FDUA100VF2	FDUA100VF2	FDUA100VF2	FDUA125VF	FDUA140VF	FDUA125VF	FDUA140VF	FDUA160VF	FDUA200VG	
Outdoor			FDCA71VNXA	FDC100VNP	FDCA100VN	FDCA100VNX	FDCA125VNX	FDCA140VNX	FDC125VSX	FDCA140VSX	FDCA160VSA	FDCA200VSA	
Power Supply	Outdoor Unit		1 Phase 230V 50Hz	1 Phase 230V 50Hz	1 Phase 230V 50Hz	1 Phase 230V 50Hz	1 Phase 230V 50Hz	1 Phase 230V 50Hz	3 Phase 415V 50Hz	3 Phase 415V 50Hz	3 Phase 415V 50Hz	3 Phase 415V 50Hz	
Capacity	Cooling T1	kW	7.1 (3.2-8.0)	10.0 (2.8-11.2)	10.0 (4.0-11.2)	10.0 (4.0-11.2)	12.5 (5.0-14.0)	14.0 (5.0-14.5)	12.5 (5.0 - 14.0)	14.0 (5.0-14.5)	16.0 (6.9-20.0)	20.0 (6.9-28.0)	
	Heating H1		8.0 (3.6-9.0)	11.2 (2.5-12.5)	11.2 (4.0-12.5)	11.2 (4.0-12.5)	14.0 (4.0-17.0)	16.0 (4.0-18.0)	14.0 (4.0- 17.0)	16.0 (4.0-18.0)	18.0 (5.5-22.4)	22.4(5.5-31.5)	
Input	Cooling T1	kW	2.22	2.99	3.05	2.85	3.83	4.44	3.83	4.44	4.83	6.03	
	Heating H1		2.22	2.88	2.87	2.74	3.68	4.41	3.68	4.44	4.66	5.5	
EER	Cooling T1		3.20	3.34	3.28	3.51	3.26	3.15	3.26	3.15	3.31	3.32	
COP	Heating H1		3.60	3.89	3.90	4.09	3.80	3.63	3.8	3.6	3.86	4.07	
Sound Pressure Level (JS C9612)	Indoor		P-Hi:38 Hi:33 Me:29 Lo:25	P-Hi:43 Hi:42 Me:40 Lo:37	P-Hi:43 Hi:42 Me:40 Lo:37	P-Hi:43 Hi:42 Me:40 Lo:37	P-Hi:45 Hi:43 Me:41 Lo:37	P-Hi:47 Hi:46 Me:43 Lo:40	P-Hi : 47 Hi : 46 Me : 43 Lo : 40	P-Hi:47 Hi:46 Me:43 Lo:40	P-Hi:49 Hi:48 Me:45 Lo:42	P-Hi:52 Hi:50 Me:47 Lo:45	
	Outdoor		51	57	49	48	48	49	48	49	59	59	
Sound Power Level (JS C9612)	Outdoor		66	70	70	70	70	72	70	70	73	73	
Airflow	Indoor	l/s	P-Hi: 400 Hi: 317 Me: 250 Lo: 167	P-Hi:650 Hi:600 Me:550 Lo:483	P-Hi:650 Hi:600 Me:550 Lo:483	P-Hi:650 Hi:600 Me:550 Lo:483	P-Hi:717 Hi:650 Me:600 Lo:500	P-Hi:850 Hi:800 Me:700 Lo:600	P-Hi:717 Hi:650 Me:600 Lo:500	P-Hi:850 Hi:800 Me:700 Lo:600	P-Hi:850 Hi:800 Me:700 Lo:600	P-Hi:1333 Hi:1200 Me:1067 Lo:933	
External Static Pressure		Ps	200	200	200	200	200	200	200	200	200	200	
External Dimensions (HXWXD)	Indoor	mm	280x950x635	398x1150x650	398x1150x650	398x1150x650	398x1150x650	398x1150x650	398x1150x650	398x1150x650	398x1150x650	398x1150x650	
	Outdoor		750x880(+88)x340	845x970x370	845x970x370	1300x970x370	1300x970x370	1300x970x370	1300x970x370	1300x970x370	1505x970x370	1505x970x370	
Net Weight	Indoor	Kg	34	52	52	52	52	52	52	52	52	89	
	Outdoor		60	70	81	105	105	105	105	105	143	143	
Refrigerant Piping	Liquid Line	mm	Ø9.52	Ø9.52	Ø9.52	Ø9.52	Ø9.52	Ø9.52	Ø9.52	Ø9.52	Ø12.7	Ø12.7	
	Gas Line		Ø15.88	Ø15.88	Ø15.88	Ø15.88	Ø15.88	Ø15.88	Ø15.88	Ø15.88	Ø22.22 , Ø25.4 or Ø28.58*	Ø22.22 , Ø25.4 or Ø28.58*	
	Connection Method		Flare Connection	Flare Connection	Flare Connection	Flare Connection	Flare Connection	Flare Connection	Flare Connection	Flare Connection	Liquid: Flare / Gas: Brazing	Liquid: Flare / Gas: Brazing	
Refrigerant R410A	Quantity	Kg	2.95	2.55	3.8	4.5	4.5	4.5	4.5	4.5	7.2	7.2	
	Pre Charged To Pipe Length	m	30	15	30	30	30	30	30	30	30	30	
Maximum Pipe Length		m	50	30	50	100	100	100	100	100	70*	70*	
Supply Air Connection		mm	170x880	348x898	348x898	348x898	348x898	348x898	348x898	348x898	348x898	250x1450	
Return Air Connection		mm	200x740	348x898	348x898	348x898	348x898	348x898	348x898	348x898	348x898	250x1450	
Controller	RC-E5, RC-EX3 or RCN-KIT4-E2												
Safety Pen			UA-SP1-E (Optional)	UA-SP2-E (Optional)	UA-SP2-E (Optional)	UA-SP2-E (Optional)	UA-SP2-E (Optional)	UA-SP2-E (Optional)	UA-SP2-E (Optional)	UA-SP2-E (Optional)	UA-SP2-E (Optional)	UA-SP2-E (Optional)	NA